

YC6A245L-D21

Prime power: 165 kW @ 1500 r/min

Standby power: 181 kW @ 1500 r/min

For clients in the places where emission regulations have not been implemented yet.

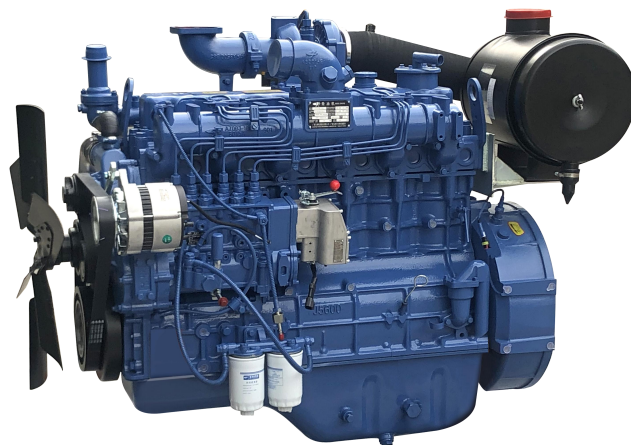
Introduction

YC6A series engine through long-term market trial, is a mature product with excellent performance and high reliability; the market quantity of it is more than one million. Such model YC6A245L-D21 is developed for the characteristics of generator unit, which is characterized by high cost performance, easy use and maintenance.

Product Features

- ◆ The engine body is made of high strength alloy cast iron, making the entire engine highly reliable even after many years of service.
- ◆ Stable operation: Electronic speed governing is adopted, ensuring small rotation speed fluctuation, stable operation, low steady speed droop and quick transient response.
- ◆ Easy maintenance: The universal rate of the parts and the parts for the products in the 6A production batch is over 90%.
- ◆ G3 performance requirements for generator set are met.

Version No.: 2017V01 Implemented on: 2017-09-01



(Image shown may not reflect actual engine)

Product Service

- ◆ Service: Yuchai has built the largest service network in the industry with the minimum service radius, the most extensive "three guarantees" and the shortest response time. 49 global offices are set up, including 14 overseas offices in Europe, Africa and South America etc. Besides, 108 overseas service agents, more than 3,000 service stations and 5,000 sales networks of fittings are established, providing the users with satisfying and considerate services.
- ◆ 24h global service hotline: +86 95098.

Engine speed	Application	Standard generator unit output		Engine power			
				Total power		Net power	
r/min		kVA	kW	kW	Ps	kW	Ps
1500	Prime	187.5	150	165	224	157	214
	Standby	200	160	181	246	173	235

Notes:

1. Prime Power: which corresponds to the basic power (PRP) described in ISO 8528. Implement the maintenance according to the Yuchai's requirement, maximum power of variable load continuous output unlimited time. The average output power shall not exceed 70% of the prime power in every 24 hours of operation.
Standby Power: In correspondence with the emergency standby power (ESP) stated in ISO 8528. Implement the maintenance according to the Yuchai's requirement, maximum power at a variable load in the event of a main power network failure up to a maximum of 200 hours per year. The average output power shall not exceed 70% of the standby power in every 24 hours of operation.
2. The engine power data stated in the table is the measured performance under the condition stated in ISO 8528-1 and ISO 3046.
3. The power output of the generator unit is calculated according to the efficiency of the AC generator. Thus, it is for reference only.
4. The kVA and kW values are converted as per standard power factor 0.8.
5. The information mentioned above is the latest one, however, the relevant information may be altered after publication.

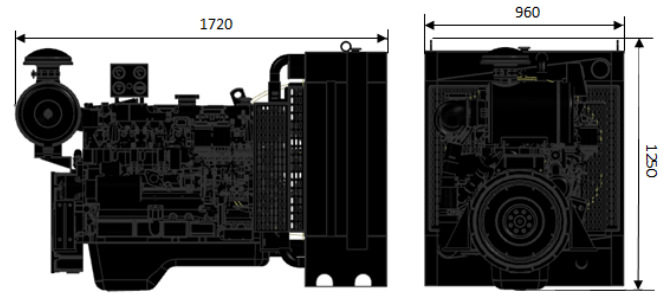
Engine load	1500 r/min	
	g/ (kW h)	L/h
Standby power	206.5	44.8
Prime power	203.3	40.2
75% prime power	199.1	29.5
50% prime power	203.2	20.1

Remarks: the diesel oil density is 0.835g/cm³.

Technical Data

Type	Vertical, in-line, water-cooled, four-stroke
Induction system	Turbocharged & Intercooled
Type of combustion chamber	Direct-injection reentrant ω combustion chamber
Cylinder quantity - Bore x stroke.	6-108×132mm
Number of valve per cylinder.	2
Displacement	7.26L
Compression ratio	17.5:1
Cylinder type	Wet-type cylinder sleeve
Working sequence	1-5-3-6-2-4
Fuel supply system	Mechanical pump + electronic governor
Lubrication mode	Combination of pressure and splashing
Starting mode	Electronic
Engine oil capacity	22L (dry-type engine)
Engine oil and fuel consumption ratio	≤0.1%
Rotation	Anticlockwise (facing the power delivery end)
Minimum no-load speed.	(650~700) r/min
Speed-regulation grade	ISO 8528 G3
Noise <i>L_p</i>	≤98dB(A)
Total dry weight	
Engine	725kg
Radiator	100kg

The final weight and sizes of the engine varies according to the specific arrangement.



Engine Arrangement

➤ Air Intake System

Air filter

➤ Cooling system

Radiator (optional)

➤ Electrical device

24V/12V electrical system

Inlet pre-heater (optional)

➤ Fuel system

Mechanical pump + electronic governor

Fuel Filter

➤ Lubrication system

Engine oil filter

➤ Flywheel and flywheel housing

SAE 11.5" flywheel

SAE 2# flywheel housing

➤ Documents

Operation Instruction

Installation Guide

Parts catalog

Fuel grade: Summer: 0# and 10# ordinary diesel oil of GB 252-2015 premium grade or first grade. Winter: 0#, -10#, -20#, and -35# ordinary diesel oil of GB 252-2015 premium grade or first grade.

Oil brand: 15W-40 in summer; 10W-30 or other environmentally suitable diesel engine oils with the quality grade not lower than Grade CH-4 as provided in GB 11122-2006 in winter.

